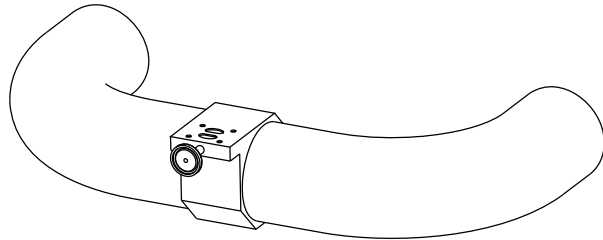
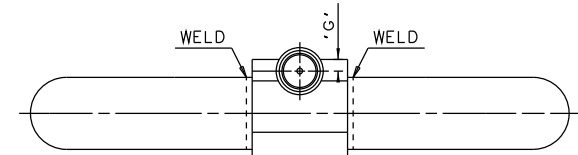
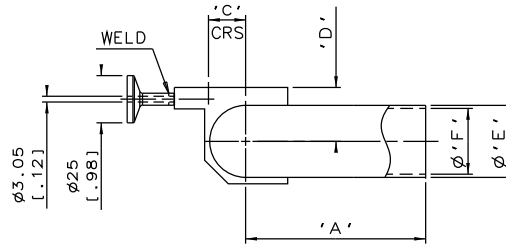
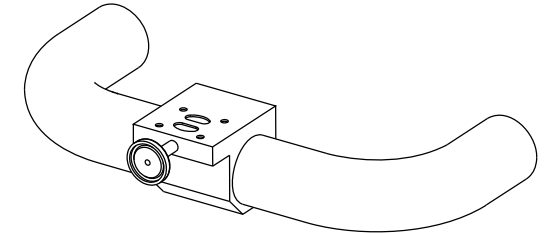
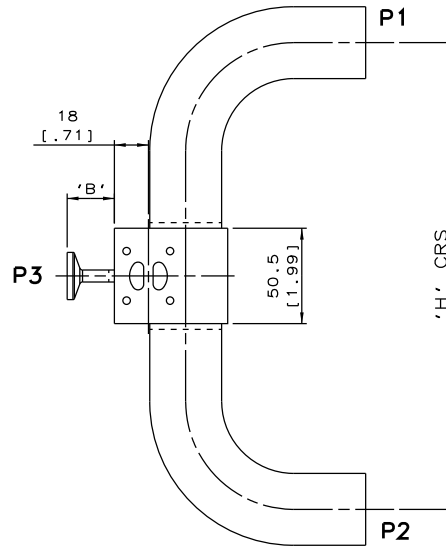


DN15/0.50
MAINLINE ONLY

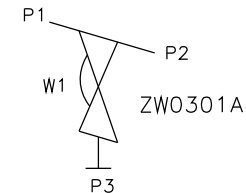


DN80/3.00 TO DN100/4.00
MAINLINE ONLY



DN20/0.75 TO DN65/2.50
MAINLINE ONLY

| MAINLINE SIZE | | A | | B | | C | | D | | øE | | øF | | G | | H | | BODY WEIGHTS |
|---------------|------|-------|------|------|------|------|------|------|------|-------|------|-------|------|-----|------|-------|-------|--------------|
| mm | inch | mm | inch | mm | inch | mm | inch | mm | inch | mm | inch | mm | inch | mm | inch | mm | inch | Kgs |
| DN15 | 0.50 | 76.2 | 3.00 | 25.0 | 0.98 | 7.2 | 0.28 | 16.5 | 0.65 | 12.7 | 0.50 | 9.4 | 0.37 | 5.2 | 0.20 | 208.9 | 8.22 | 0.5 |
| DN20 | 0.75 | 76.2 | 3.00 | 25.0 | 0.98 | 10.2 | 0.40 | 21.0 | 0.83 | 19.05 | 0.75 | 15.75 | 0.62 | 6.2 | 0.24 | 208.9 | 8.22 | 0.5 |
| DN25 | 1.00 | 76.2 | 3.00 | 25.0 | 0.98 | 13.6 | 0.54 | 24.0 | 0.94 | 25.4 | 1.00 | 22.1 | 0.87 | 5.2 | 0.20 | 208.9 | 8.22 | 0.8 |
| DN40 | 1.50 | 95.3 | 3.75 | 25.0 | 0.98 | 19.7 | 0.78 | 28.5 | 1.12 | 38.1 | 1.50 | 34.8 | 1.37 | 6.2 | 0.24 | 247.1 | 9.73 | 1.1 |
| DN50 | 2.00 | 120.7 | 4.75 | 25.0 | 0.98 | 26.1 | 1.03 | 33.2 | 1.31 | 50.8 | 2.00 | 47.5 | 1.87 | 6.2 | 0.24 | 297.9 | 11.73 | 1.5 |
| DN65 | 2.50 | 139.8 | 5.50 | 25.0 | 0.98 | 32.6 | 1.28 | 36.0 | 1.42 | 63.5 | 2.50 | 60.2 | 2.37 | 5.2 | 0.20 | 336.1 | 13.23 | 2.0 |
| DN80 | 3.00 | 158.8 | 6.25 | 25.0 | 0.98 | 39.0 | 1.54 | 41.1 | 1.62 | 76.2 | 3.00 | 72.9 | 2.87 | 5.2 | 0.20 | 388.1 | 15.28 | 2.4 |
| DN100 | 4.00 | 203.2 | 8.00 | 25.0 | 0.98 | 51.3 | 2.02 | 53.8 | 2.12 | 101.6 | 4.00 | 97.38 | 3.84 | 5.2 | 0.20 | 476.9 | 18.78 | 4.6 |



ORIENTATION AS
PER P&ID DIAGRAM
FOR OPTIMUM
DRAINABILITY.

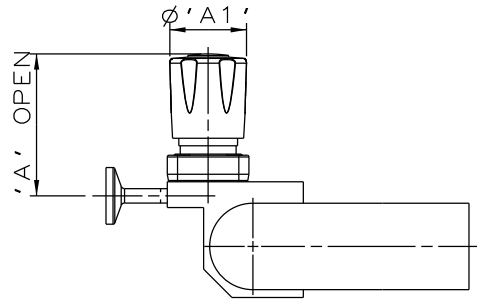
The information on this sheet is Private and Confidential and is the property of Crane Process Flow Technologies Limited and must not be published directly or indirectly in any manner whatsoever without the written permission of the Company and must not be used in any way detrimental to their interests.
© Crane Process Flow Technologies

CRANE Process Flow Technologies
A Crane Co. Company

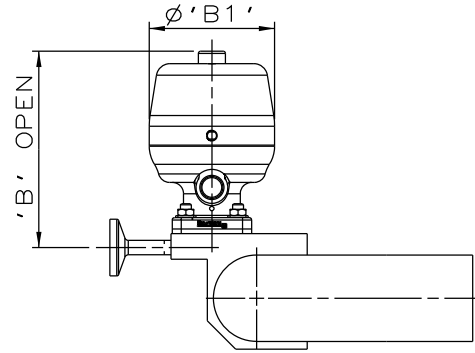
Saunders
The Science Inside

Title
SCHEDULE OF LEADING DIMENSIONS FOR DN8/0.25
WEIR POINT OF USE 'T' BODY COMPLETE WITH :
MAINLINE : BUTT WELD OD TUBE ENDS
BRANCH : DN8/0.25 HYGIENIC CLAMP END

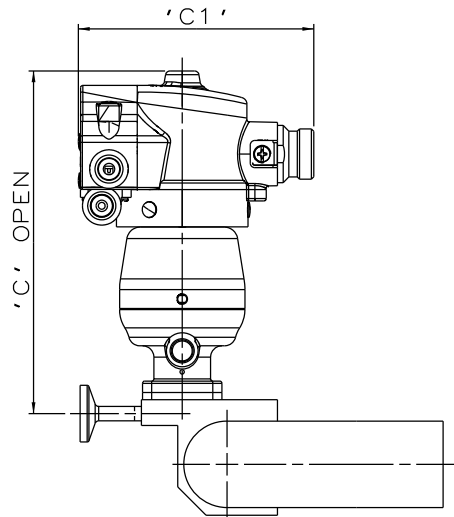
| | | | |
|---------------------------------------|--------------------|-------------------------------------|-------------|
| Drawn RI | Date 14.10.11 | UNCONTROLLED IN HARD COPY FORMAT | |
| Checked RND | Date 21.03.12 | | |
| First Angle Projection Method E | DO NOT SCALE | Drawing No. WEB040 | Issue. 2 |



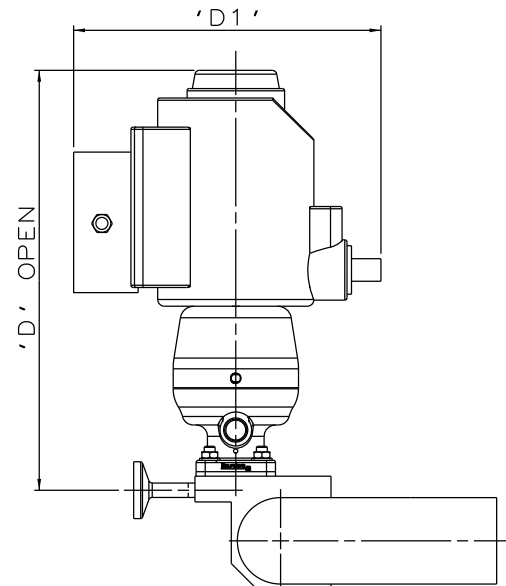
PURE PERFORMANCE
BONNET ASSEMBLY



*S360 ACTUATOR



*S360 ACTUATOR
WITH M-VUE SENSOR



*S360 ACTUATOR
WITH I-VUE SENSOR

The information on this sheet is Private and Confidential and is the property of Crane Process Flow Technologies Limited and must not be published directly or indirectly in any manner whatsoever without the written permission of the Company and must not be used in any way detrimental to their interests.

© Crane Process Flow Technologies

| | | |
|---|--|---------------------------------------|
| CRANE | Process Flow Technologies A Crane Co. Company | Saunders The Science Inside |
| Title | | |
| SCHEDULE OF LEADING DIMENSIONS FOR DN8/0.25 WEIR T-BODY (DN8/0.25 BRANCH) WITH MAINLINE BUTT WELD OD TUBE ENDS, BRANCH TRI-CLAMP END, FITTED WITH TOPWORKS OPTIONS | | |
| Drawn R1 | Date 28.06.16 | UNCONTROLLED IN HARD COPY FORMAT |
| Checked RND | Date 28.06.16 | |
| First Angle Projection Method E | | DO NOT SCALE |
| Drawing No. WEB-040-ASSY | | Issue. 1 |

* DIMENSIONS SHOW MAXIMUM ENVELOPE FOR ALL MODES

| BRANCH SIZE | | A | | A1 | | B | | B1 | | C | | C1 | | D | | D1 | |
|-------------|------|------|------|------|------|------|------|------|------|-------|------|-------|------|-------|------|-------|------|
| mm | inch | mm | inch | mm | inch | mm | inch | mm | inch | mm | inch | mm | inch | mm | inch | mm | inch |
| DN8 | 0.25 | 62.6 | 2.46 | 34.0 | 1.34 | 86.2 | 3.39 | 55.0 | 2.18 | 151.2 | 5.95 | 103.8 | 4.09 | 185.2 | 7.29 | 136.0 | 5.35 |